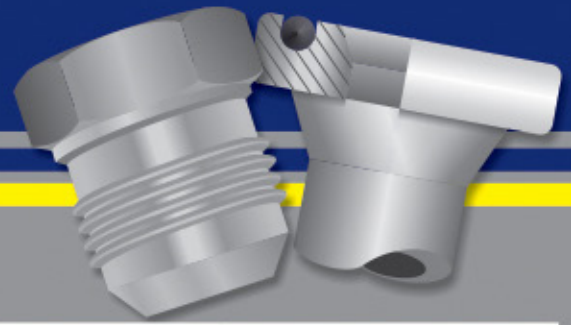


Imperial Thread Chart



		BSPT			BSP / JIS BSP			JIC & UNO			NPT		
		<i>British Standard Pipe (Tapered)</i>			<i>British Standard Pipe (Parallel)</i>			<i>UNF Thread</i>			<i>National Pipe Thread</i>		
Dash Size	Size	Thread	Male OD (TPI)	Female ID (TPI)	Thread	Male OD (TPI)	Female ID (TPI)	Thread	Male OD (TPI)	Female ID (TPI)	Thread	Male OD (TPI)	Female ID (TPI)
-02	1/8"	1/8"x28	.390"	.345"	1/8"x28	.390"	.345"	5/16"x24	.313"	.234"	1/8"x27	.400"	.344"
-03								3/8"x24	.375"				
-04	1/4"	1/4"x19	.532"	.456"	1/4"x19	.532"	.456"	7/16"x20	.438"	.391"	1/4"x18	.563"	.456"
-05	5/16"							1/2"x20	.500"	.453"			
-06	3/8"	3/8"x19	.656"	.594"	3/8"x19	.656"	.594"	9/16"x18	.563"	.500"	3/8"x18	.687"	.594"
-08	1/2"	1/2"x14	.825"	.735"	1/2"x14	.825"	.735"	3/4"x16	.750"	.687"	1/2"x14	.832"	.750"
-10	5/8"	5/8"x14	.906"	.818"	5/8"x14	.906"	.818"	7/8"x14	.875"	.805"			
-12	3/4"	3/4"x14	1.051"	.961"	3/4"x14	1.051"	.961"	1-1/16"x12	1.063"	.969"	3/4"x14	1.063"	.961"
-14								1-3/16"x12	1.188"	1.095"	1"x11.5	1.313"	1.187"
-16	1"	1"x11	1.313"	1.187"	1"x11	1.313"	1.187"	1-5/16"x12	1.313"	1.234"	1-1/4"x11.5	1.6871"	1.563"
-20	1-1/4"	1-1/4"x11	1.656"	1.531"	1-1/4"x11	1.656"	1.531"	1-5/8"x12	1.625"	1.547"	1-1/2"x11.5	1.906"	1.750"
-24	1-1/2"	1-1/2"x11	1.875"	1.781"	1-1/2"x11	1.875"	1.781"	1-7/8"x12	1.875"	1.797"	2"x11.5	2.375"	2.250"
-32	2"	2"x11	2.345"	2.219"	2"x11	2.345"	2.219"	2-1/2"x12	2.500"	2.422"			
-40	2 1/2"	2 1/2" x 11	2.91"	2.83"	2 1/2" x 11	2.956"	2.858"						
-48	3"	3" x 11	3.41	3.33"	3" x 11	3.46"	3.362"						

		ORFS (UNF THREAD)			SAE 45 FLARE			SAE CODE 61			SAE CODE 62		
		<i>O Ring Face Seal</i>			<i>UNF Thread</i>								
Dash Size	Size	Thread	Male OD (TPI)	Female ID (TPI)	Thread	Male OD (TPI)	Female ID (TPI)		OD (MM)	THICKNESS (MM)		OD (MM)	THICKNESS (MM)
-02	1/8"				5/16"x24	.313"	.234"						
-03					3/8"x24	.375"							
-04	1/4"	9/16"x18	.563"	.500"	7/16"x20	.438"	.391"						
-05	5/16"				1/2"x20	.500"	.453"						
-06	3/8"	11/16"x16	.688"	.625"	5/8"x18	.625"	.563"						
-08	1/2"	13/16"x16	.813"	.750"	3/4"x16	.750"	.687"		30.2	6.73		31.7	7.75
-10	5/8"	1"x14	1.000"	.937"	7/8"x14	.875"	.805"		34	6.73			
-12	3/4"	1-3/16"x12	1.188"	1.095"	1-1/16"x14	1.063"	.984"		38.1	6.73		41.3	8.76
-16	1"	1-7/16"x12	1.438"	1.344"	1-5/16"x12	1.313"	1.234"		44.5	8		47.6	9.53
-20	1-1/4"	1-11/16"x12	1.688"	1.594"	1-5/8"x12	1.625"	1.547"		50.8	8		54	10.29
-24	1-1/2"	2"x12	2.000"	1.906"	1-7/8"x12	1.875"	1.797"		60.3	8		63.5	12.57
-32	2"				2-1/2"	2.500"	2.422"		71.4	9.53		79.4	12.57
-40	2 1/2"								84.1	9.53			
-48	3"								101.6	9.53			