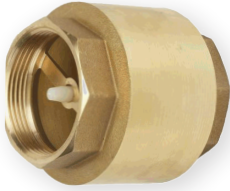


Check Valves - Spring

Brass York

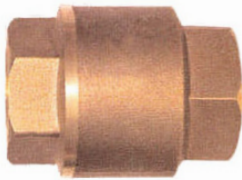


Applications: Water, Oil, Air
Working Pressure: 150 PSI
Temperature: -20°C to +100°C
Threads: BSPP, ISO 228

Size (in)	PRODUCT CODE
3/8	BRVC-010
1/2	BRVC-015
3/4	BRVC-020
1	BRVC-025
1 1/4	BRVC-032
1 1/2	BRVC-040
2	BRVC-050
2 1/2	BRVC-065
3	BRVC-080
4	BRVC-100

MAXIMUS

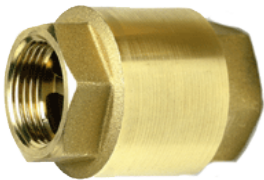
Brass Seat



Applications: Water, Oil, Gas, Air
Working Pressure: 275 PSI
Temperature: -20°C to +100°C
Threads: BSPP, ISO 228

Size (in)	PRODUCT CODE
1/2	BRVCEB2-015
3/4	BRVCEB2-020
1	BRVCEB2-025
1 1/4	BRVCEB2-032
1 1/2	BRVCEB2-040
2	BRVCEB2-050
2 1/2	BRVCEB2-065
3	BRVCEB2-080
4	BRVCEB2-100

DZR Watermark



Applications: Water, Oil, Gas, Air
Working Pressure: 1/2 580 PSI
 3/4 - 1 435 PSI
 1 1/4 - 2 360 PSI
 2 1/2 - 4 230 PSI
Temperature: -20°C to +90°C
Threads: BSPP, ISO 228

Size (in)	PRODUCT CODE
1/2	BDVCWE-015
3/4	BDVCWE-020
1	BDVCWE-025
1 1/4	BDVCWE-032
1 1/2	BDVCWE-040
2	BDVCWE-050
2 1/2	BDVCWE-065
3	BDVCWE-080
4	BDVCWE-100