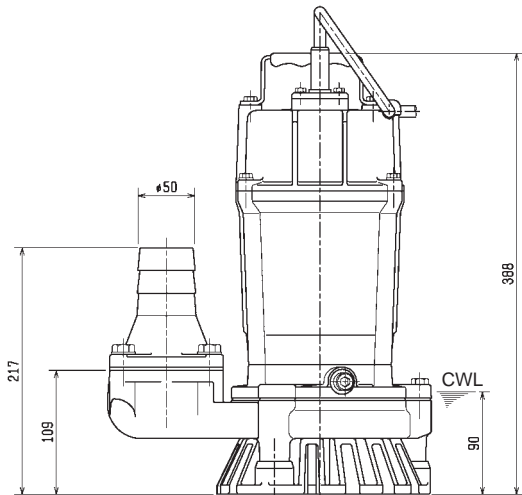
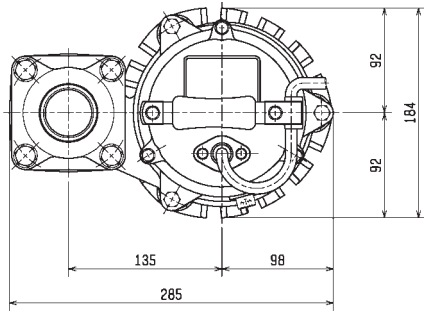
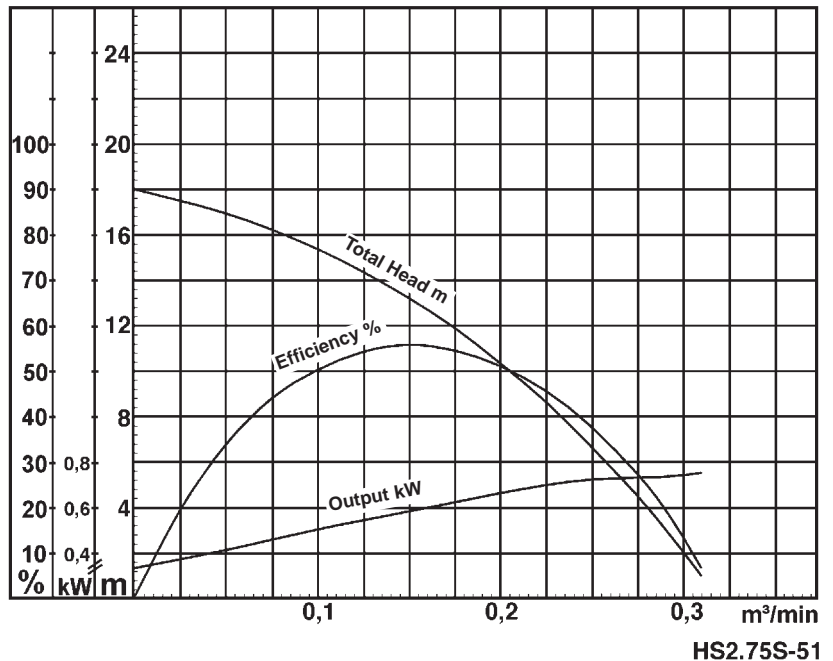


# Data Sheet HS2.75S-51



CWL = Continuous running water level  
HS2.75S-51  
dimensions in mm



## Classification

Electric submersible pump  
Protection class IP68  
Depth of submersion max. 20m  
Semi-vortex impeller with Agitator  
Max. solid handling 7mm  
Suitable for rain water, ground water, sand carrying water

## Electric Motor

Dry-type submersible induction motor  
Insulation class E, 2 poles, 2812 r.p.m.  
Capacitor start  
Voltage: 110V/230V, 50Hz, 1-phase  
Power input: 1,05kW  
Power output: 0,75kW  
Nominal current: 10,0A(110V) / 4,6A(230V)  
Start current: 27,0A(110V) / 14,0A(230V)

## Electric cable

10m HO7RN-F 3Cx1,5mm<sup>2</sup> (110V)  
10m HO7RN-F 3Cx1mm<sup>2</sup> (230V)

## Motor Protection

Circle thermal protector  
(snap-action bi-metal device)

## Shaft Seal

Double mechanical seal in oil bath  
additional lubrication by oil lifting device  
Primary Seal:  
silicon carbide on silicon carbide  
Secondary Seal:  
carbon on ceramic

## Bearings

Shielded ball bearings, maintenance-free

## Materials

Impeller: Urethane rubber  
Casing: FCD700 (EN-GJS-700-2)  
Motor frame: Aluminium alloy casting  
Shaft: SUS403 (EN-X6Cr13)

## Discharge Connection

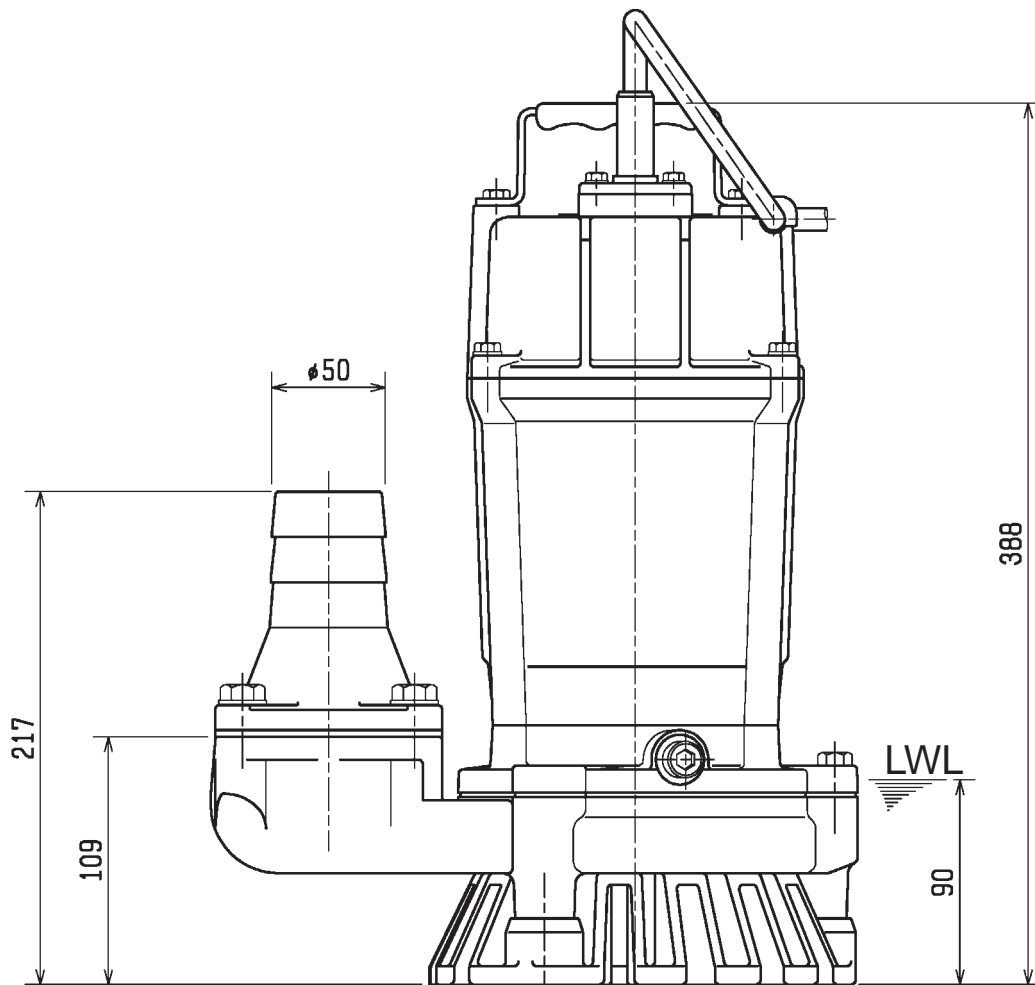
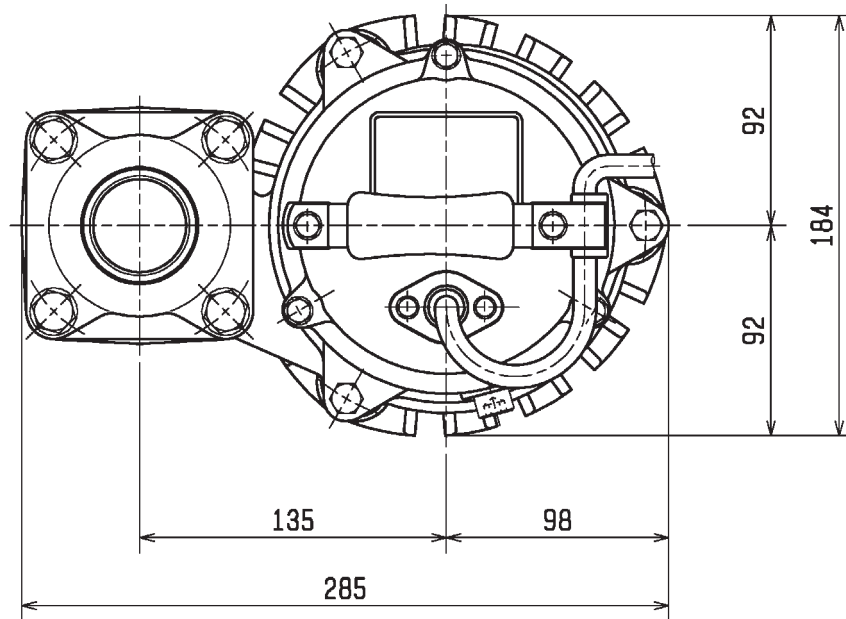
2" (50mm) BS-Coupling (threaded flange)

## Weight

18,2 kg (dry weight of the pump without cable)

# Dimensional Drawing HS2.75S-51

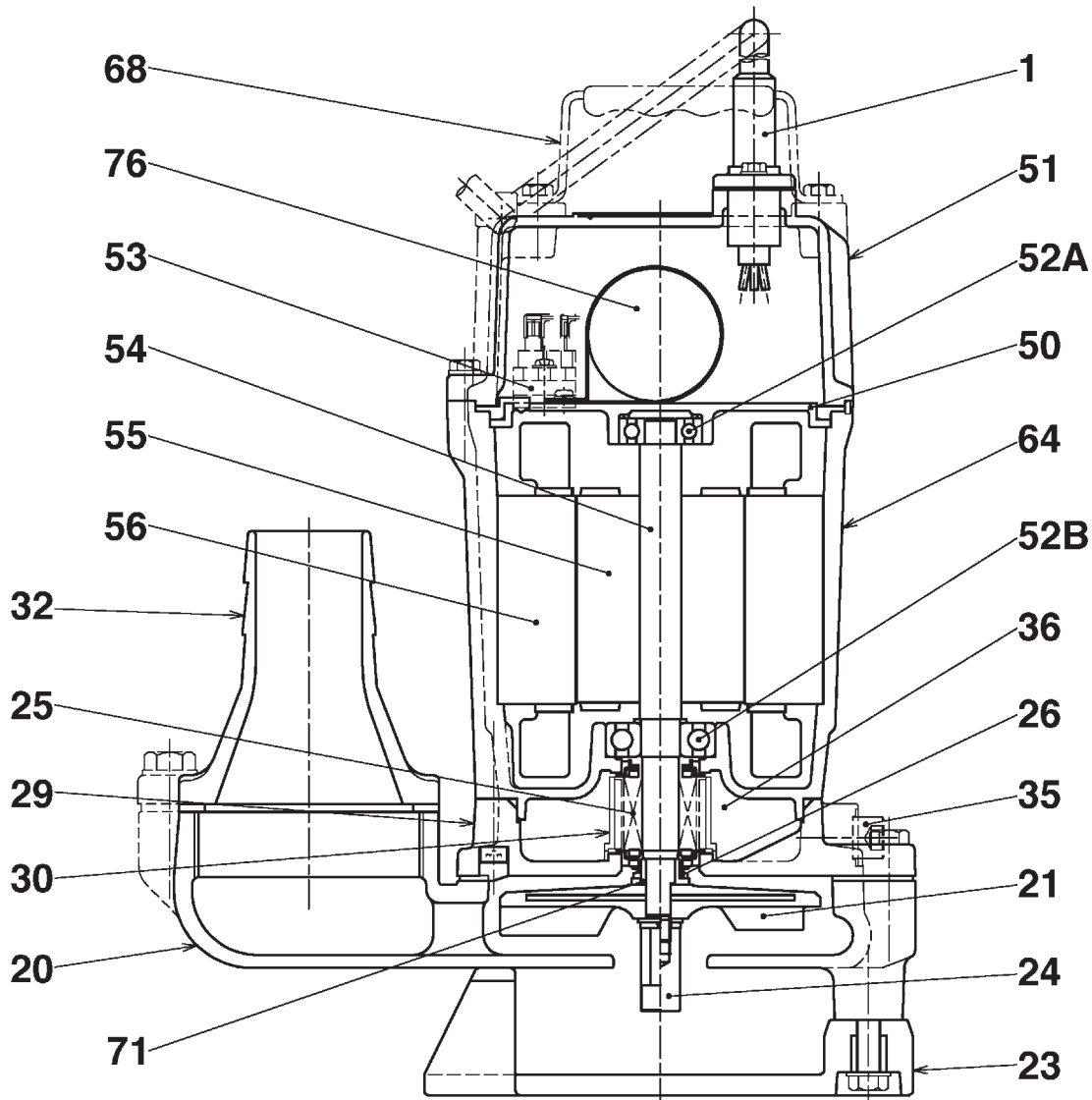
Dimensions in mm



LWL: Lowest Running Water Level

**HS2.75S-51**

# Sectional Drawing HS2.75S-51



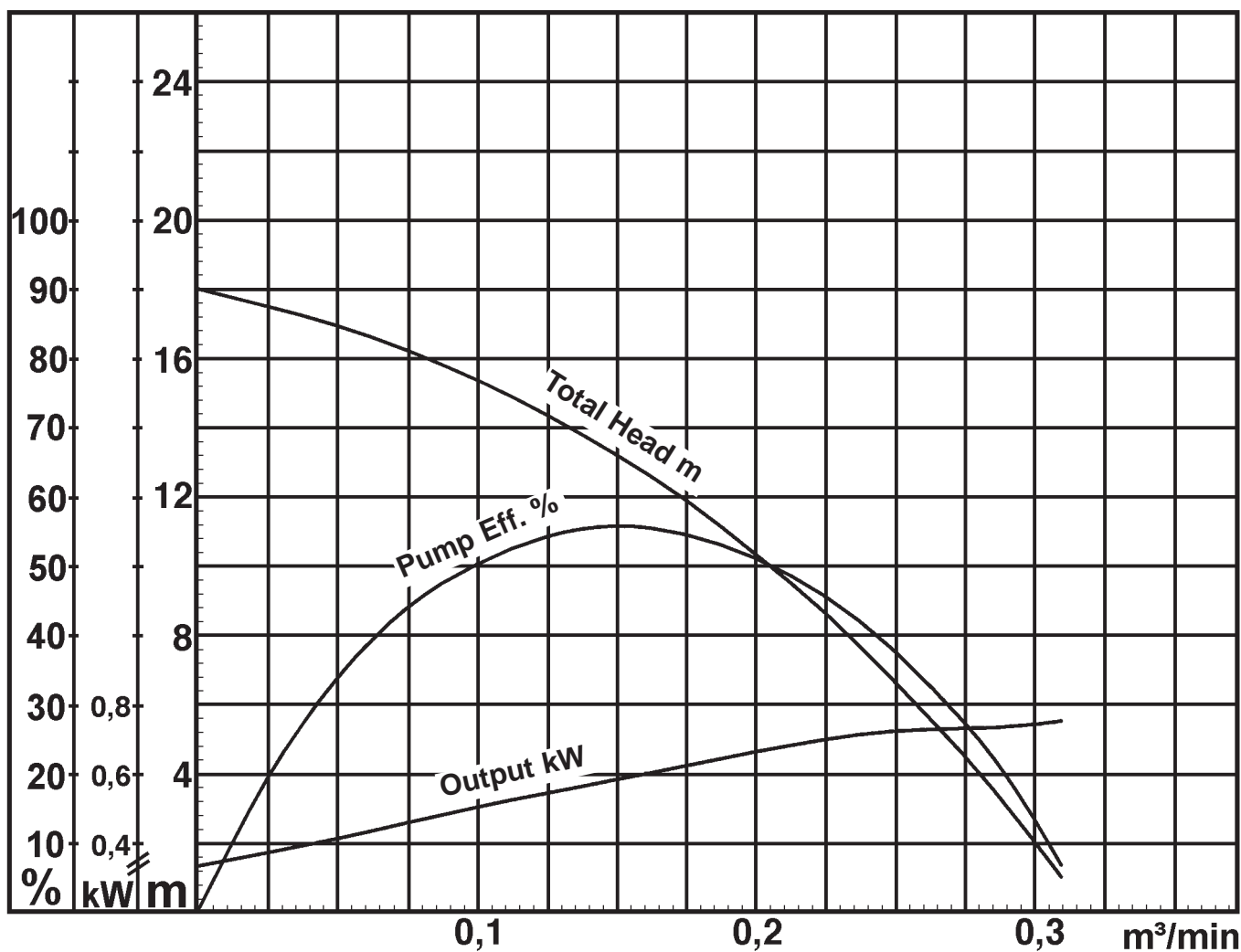
**HS2.75S-51**

No.	Description	Qty.	Remarks	No.	Description	Qty.	Remarks
1	Cabtyre Cable	1	H07RN3Cx1mm <sup>2</sup> x10m	50	Motor Bracket	1	Aluminium die casting
20	Pump Casing	1	FCD700 (EN-GJS-700-2)	51	Head Cover	1	Aluminium die casting
21	Impeller	1	Urethane rubber	52A	Upper Bearing	1	6201ZZC3
23	Strainer Stand	1	PVC	52B	Lower Bearing	1	6302ZZC3
24	Stirrer	1	Sintered Alloy	53	Motor Protector	1	
25	Mechanical Seal	1	W-14VL	54	Shaft	1	SUS403 (EN-X6Cr13)
26	V-Seal	1	Nitril Butadiene Rubber	55	Rotor	1	
29	Oil Casing	1	FC200 (EJ-GJL-200)	56	Stator Complete	1	
30	Oil Lifter	1	Plastic	64	Motor Frame	1	Aluminium die casting
32	Hose Coupling	1	Aluminium die casting	68	Handle	1	Steel plate/natural rubber
35	Oil Plug	1	SUS304 (EN-X5CrNi18-10)	71	Shaft Sleeve	1	SUS304 (EN-X5CrNi18-10)
36	Lubricant	1	Turbine oil ISO VG 32	76	Capacitor	1	

# Pump Performance Curve

## HS2.75S-51

Discharge Bore	50 mm
Total Head	max.15 m
Capacity	max. 0,30 m <sup>3</sup> /min
Motor Output	0,75 kW
Motor Input	1,05 kW
Phase	1
Voltage	110/230 V
Frequency	50 Hz
Rated Current	10,0/4,6 A
Starting Current	27,0/14,0 A
Poles	2
Revolution	S.S. 2812 r.p.m.
Starting Method	Capacitor
Insulation Class	E



HS2.75S-51