

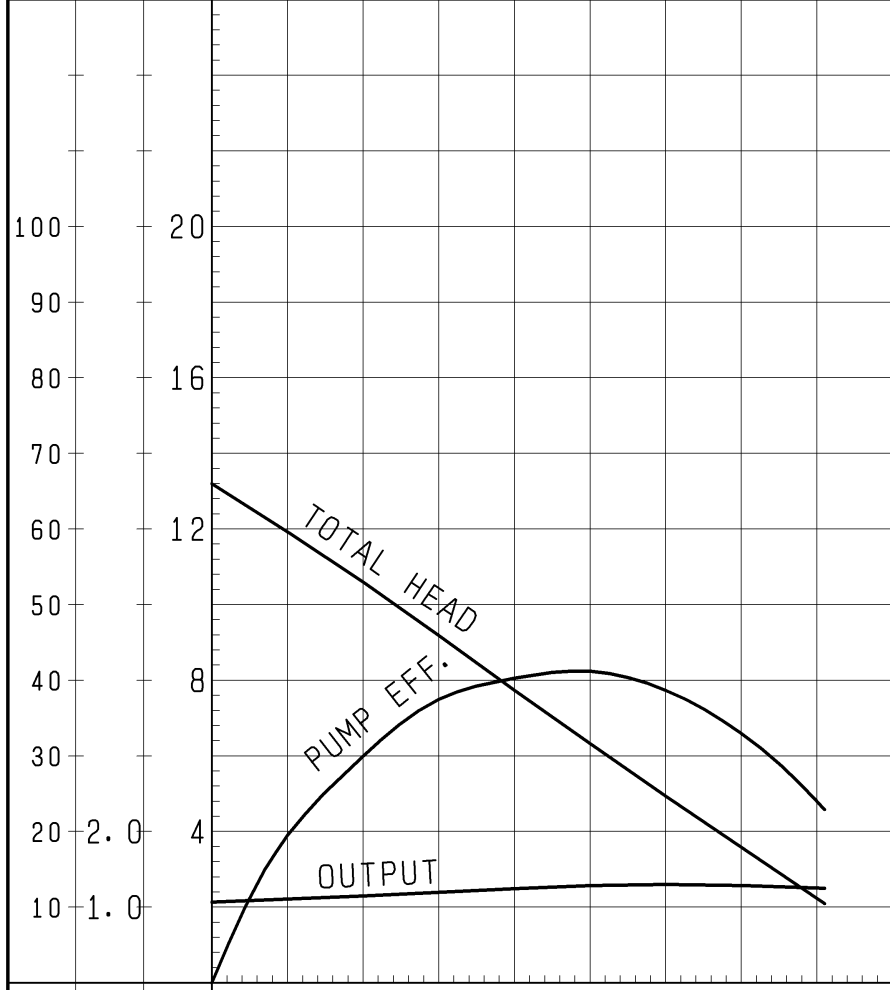
# PUMP PERFORMANCE CURVES

TYPE	Sewage Submersible Cutter Pump	MODEL	80C (A/W) 21.5 -52 TOS80C (A/W) 21.5 -52	FREQUENCY	50 Hz
------	-----------------------------------	-------	---	-----------	-------

CUSTOMER'S NAME \_\_\_\_\_  
 EQUIPMENT TITLE \_\_\_\_\_ NO. \_\_\_\_\_

	STANDARD SPECIFICATIONS	REQUIRED SPECIFICATIONS
DISCHARGE BORE	80 mm	mm
TOTAL HEAD	7 m	m
CAPACITY	0.45 m <sup>3</sup> /min	m <sup>3</sup> /min
MOTOR OUTPUT	1.5 kW	kW
PHASE × VOLTAGE	3 φ × V	φ × V
CURRENT	A	A
POLES / REVOLUTION	2 P / s. s. 3000 min <sup>-1</sup>	P / min <sup>-1</sup>
STARTING METHOD	DIRECT ON LINE	
INSULATION CLASS	F	

REMARKS:



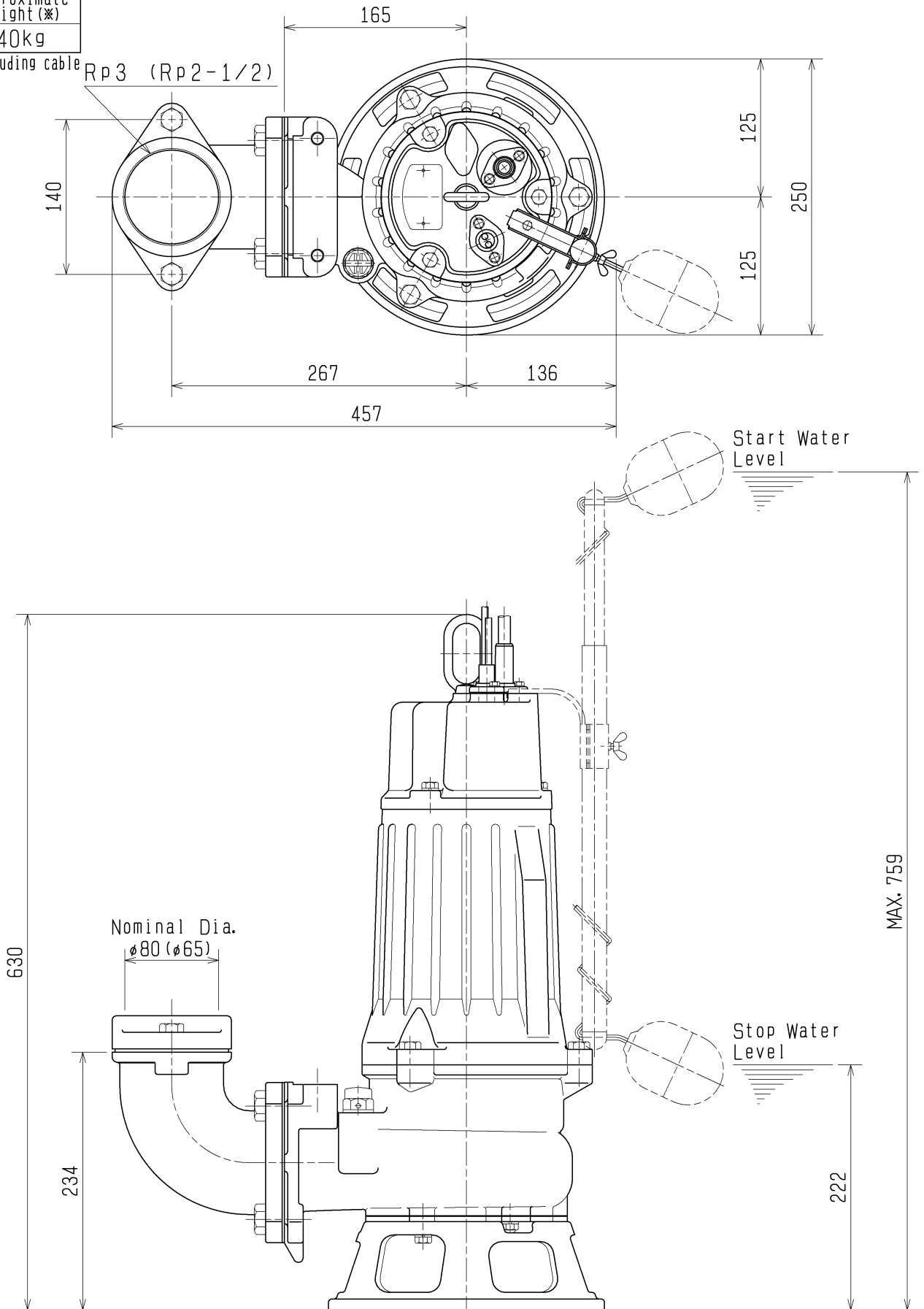
%	kW	m	CAPACITY
PUMP EFF.	OUTPUT	TOTAL HEAD	m <sup>3</sup> /min
			0.5
			1.0

TSURUMI MFG. CO., LTD.

DIMENSION DRAWING		No.	No. A-11473-3
TYPE	Sewage Submersible Cutter Pump (Automatic)	MODEL	80CA21.5 -52/62

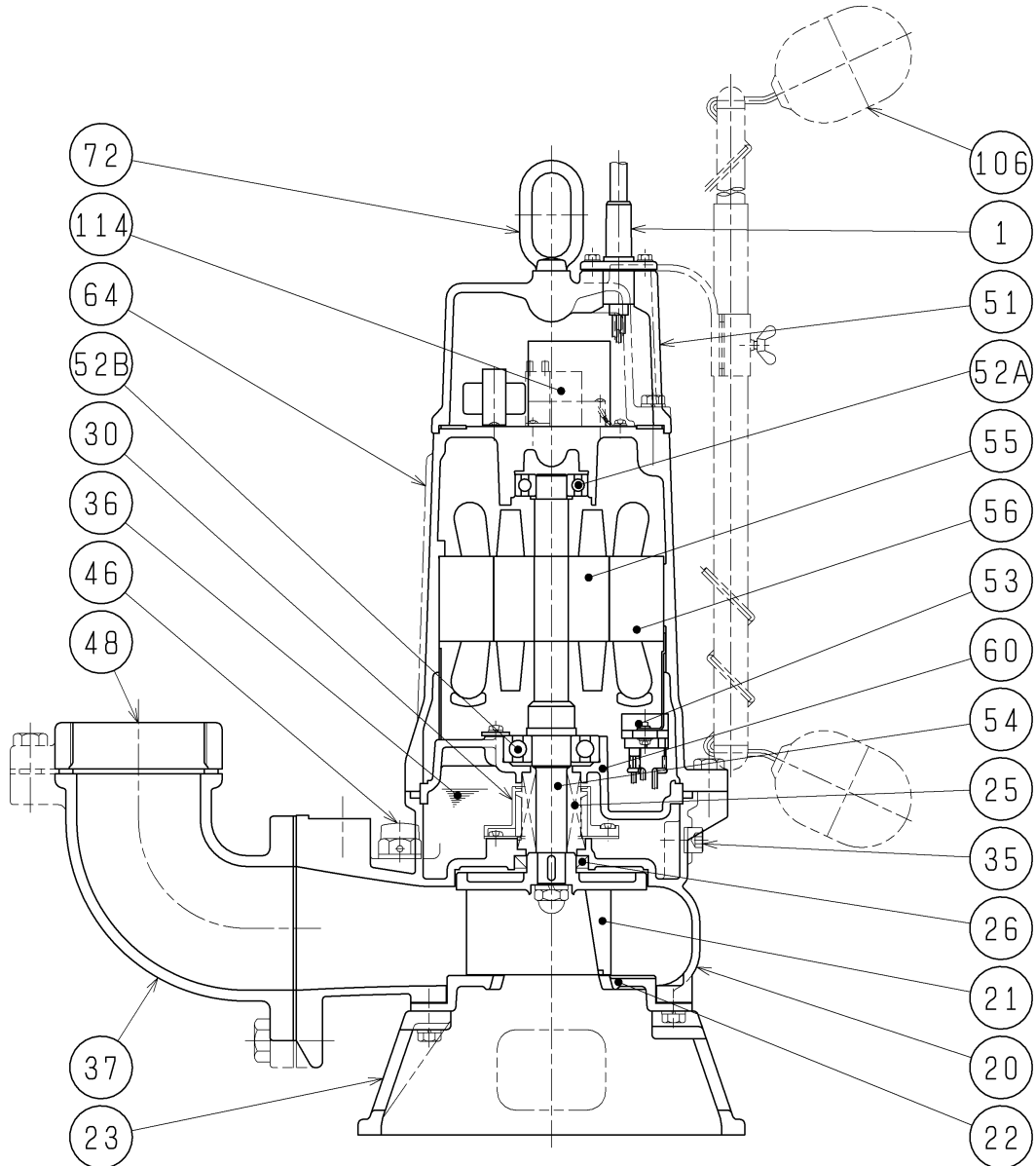
Approximate Weight (※)  
40kg

※excluding cable



The Figure in ( ) shows the dimensions of discharge Bore at Nominal  $\phi 65$ .

<b>SECTIONAL DRAWING</b>		No.	No. A-11476-5
TYPE	Sewage Submersible Cutter Pump (Automatic)	MODEL	80CA21.5 -52/62



REQ. SPECIFICATION

※ the wetted part

No.	DESCRIPTION	Q'TY	MATERIAL / NOTE	No.	DESCRIPTION	Q'TY	MATERIAL / NOTE
1	Cable	1	PVC Sheath	51	Head Cover	1	Gray Iron Casting
20	Pump Casing	1	Gray Iron Casting	52A	Upper Bearing	1	6204ZCC3
21	Impeller	1	Gray Iron Casting (WC Edge)	52B	Lower Bearing	1	6305ZCC3
22	Suction Cover	1	Ductile Iron Casting	53	Motor Protector	1	
23	Strainer Stand	1	Gray Iron Casting	54	Shaft	1	Stainless Steel 420J2(※)
25	Mechanical Seal	1	H-20A	55	Rotor	1	
26	Oil Seal	1	TC32488	56	Stator	1	
30	Oil Lifter	1	Plastic	60	Bearing Housing	1	Gray Iron Casting
35	Oil Plug	1	Stainless Steel 304	64	Motor Frame	1	Gray Iron Casting
36	Lubricant		Turbine Oil (ISO VG32)	72	Eye Bolt	1	Stainless Steel 304
37	Discharge Bend	1	Gray Iron Casting	106	Float	2	Plastic
46	Air Release Valve	1	Nylon	114	Relay Unit	1	
48	Screwed Flange	1	Gray Iron Casting				